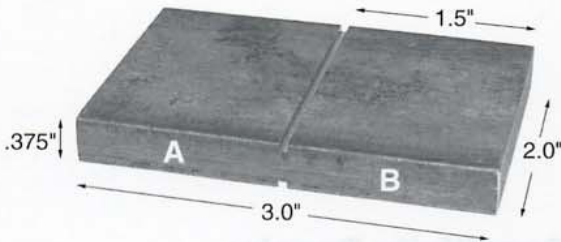


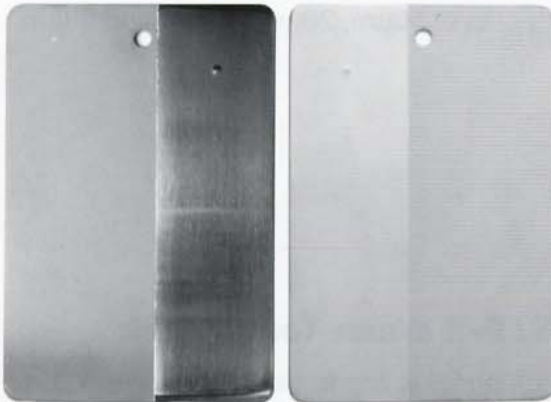
## PENETRANT TEST PIECES



### Cracked Aluminum Block (Penetrant Comparator):

Meets ASME boiler Pressure Code, Section V & III, MIL-1-25135 and AMS-2644. The cracked aluminum block is made from SB-211 Type 2024 aluminum, rolled 3/8" thick with dimensions of 2 x 3 inches. A notch separates the block's two sides to facilitate side by side comparisons.

### Sherwin PSM-5 Penetrant System Monitor Panel:



PSM-5 Panel  
(Polished)

PSM-5 Panel  
(Grit)

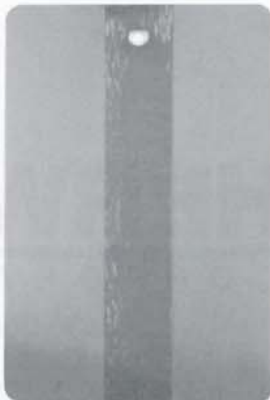
A stainless steel panel, 0.090" thick and measuring 4 x 6 inches. A chrome plated strip runs the length of one side of the panel. Five crack centers are evenly spaced in the chrome plating in order of magnitude; the largest is readily visible with low sensitivity penetrants, while the smallest is difficult to observe even with high sensitivity materials. Adjacent to the chrome plated section is a grit blasted area of "medium roughness" to judge penetrant wash characteristics.

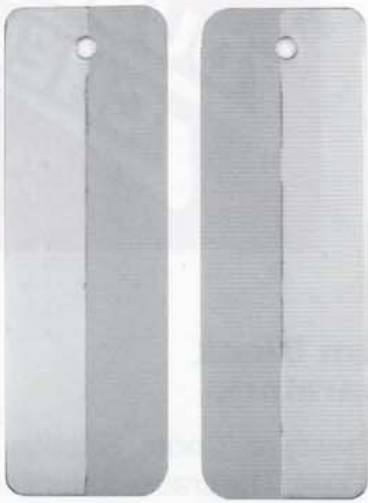
The **PSM-5 Panel** comes in two versions. Both versions are manufactured to Pratt-Whitney P/N TAM 146040 specifications. One has a chrome strip which has been lightly grit blasted in order to dull the surface. The chrome plated strip of the second version is not grit blasted. Sherwin Incorporated is an authorized manufacturer of TAM 146040 panels.

**PSM-5 Panel** processing meets MIL-STD-6866 and ASTM E-1417 requirements for daily system check.

### Sherwin WTP-1 Wash Test Panel:

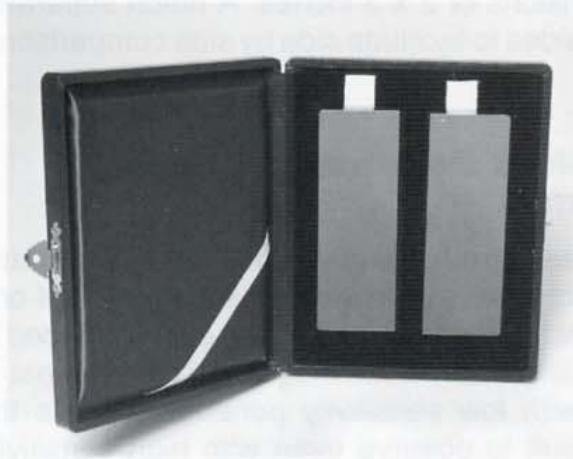
A stainless steel panel measuring 4 x 6 inches and 0.090" thick with two parallel, "medium rough" strips, each 6 x 1.5 inches separated by a smooth 1 inch strip. The wash panel is used to evaluate removability testing required by MIL-STD-6866 and ASTM E-1417.





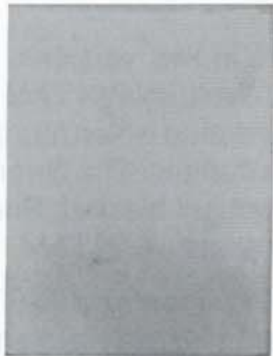
### **Sherwin Twin KDS Panels:**

A pair of nearly identical panels with matching crack patterns. Being rugged, **Sherwin Twin KDS Panels** may be used to satisfy MIL-STD-6866 and ASTM E-1417 requirements for daily system checks. And, having matching cracks of known sizes, the panels may be used to compare penetrant performance.



### **Twin NiCr Sensitivity Panels:**

A set of two panels, each measuring 3.875 x 1.875 inches (100 x 35mm), sheared from the same stock with matching crack patterns. Makes simultaneous comparison of two penetrant batches practical. Available in sets having crack depths of 10µm, 20µm, 30µm, and 50µm.



### **Sherwin WTP-2 Wash Test Panel:**

The 1.5 x 2 inch panel is made from 16 guage 301 or 302 stainless steel by grit blasting with 80 mesh aluminum oxide grit and 60 psi of air pressure. The roughened surface that is produced is free of scratches and blemishes. This panel is used to run removability tests.

**SHERWIN**  
INCORPORATED

5530 Borwick Ave.  
South Gate, CA 90280  
(562) 861-6324 FAX (562) 923-8370  
email: sherwininc@aol.com